

# COACHING SKILLS FOR MANAGERS AND EXECUTIVES

Taking  
Coaching Skills  
to new heights



## Four easy ways to register:

Phone: +1-706-542-3537 or

800-811-6640 (toll free in the USA)

Fax: +1-706-542-7537

Email: [questions@georgiacenter.uga.edu](mailto:questions@georgiacenter.uga.edu)

## Program Instructors

The executive coaching programs are taught by the authors of *The Sherpa Guide: Process-Driven Executive Coaching*. A signed copy is included with the program fee. The book sets the standard for "how to coach" books, and for the field of coaching itself. This is a book packed with actionable items — tips and techniques for the coach to use with any client.



**Brenda Corbett** is Vice President of Sherpa Coaching, a consulting firm that partners with universities to train and certify executive coaches. As an educator, she is a lead instructor for the Sherpa Executive Coaching Certification Program. She has trained coaches for a list of client companies including 3M, Federal Express, Toyota, and U.S. Bank.

Brenda is a practicing executive coach, working with top-line individuals to help them through professional challenges and the demands of corporate life. She has used the Sherpa coaching process to spark leadership teams to peak performance. In 2005, client TriHealth documented a \$1.1 million improvement to the bottom line following a 6-month team coaching engagement. Coaching clients include Johnson and Johnson and L'Oreal, and client awards include "Best Place to Work" and "Small Business of the Year."

As co-author of *The Sherpa Guide: Process-Driven Executive Coaching*, Brenda provides clear methodology and standards for a rapidly growing industry. Coming out of health care administration, she took on employee retention in the early days of the "welfare to work" movement. She developed innovative programs, including "Missing Link," soft skills training for front-line supervisors, and "Fresh Air," promoting front-line work ethic. She is now focused on training management teams and top-line executives.

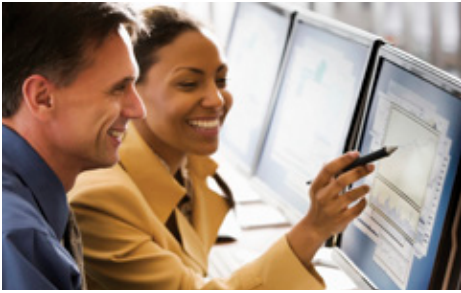
In addition to *The Sherpa Guide: Process-Driven Executive Coaching*, Brenda has written two business books in health care: *Volunteer With Me* and *More Than A Game*. She has also written for *HR.com*, *Teamwork* magazine, and *Customer Service News*, among others.

Her volunteer efforts with the United Way of Butler County, OH, have earned Brenda and her company the Community Service Company of the Year Award for 2005-2006. She holds a degree in human kinetics and leisure studies from the prestigious University of Waterloo in Ontario, Canada.



The University of Georgia  
Center for Continuing Education

The University of Georgia is committed to principles of equal opportunity and affirmative action. • 7-11/15466



# COACHING SKILLS FOR MANAGERS AND EXECUTIVES

Taking  
**Coaching Skills**  
to new heights



## Four easy ways to register:

Phone: +1-706-542-3537 or

800-811-6640 (toll free in the USA)

Fax: +1-706-542-7537

Email: [questions@georgiacenter.uga.edu](mailto:questions@georgiacenter.uga.edu)

## Program Instructors continued



**Judith Colemon** is CEO of Sherpa Coaching, a minority business enterprise that partners with universities to train and certify executive coaches. As an educator, she is a lead instructor for the Sherpa Executive Coaching Certification Program. She has trained coaches for a list of client companies including Federal Express, Liz Claiborne, Toyota, and US Bank. Judith co-authored *The Sherpa Guide: Process-Driven Executive Coaching*, used as a text by several executive education programs.

Prior to starting Sherpa Coaching LLC, Judith served as a top executive for both startup and established institutions. As Executive Director of TRIP, the Transportation Resource and Information Project, she pioneered public and private cooperation in the "welfare to work" movement and built an agency with a \$7 million budget. As CEO of the Better Housing League, she took the reins of an organization with roots dating back to World War I and led the agency through some difficult transitions.

In June 2003, Judith was invited to South Africa to share her expertise on training and development by working with the national railroad and telephone companies, Rustenburg Platinum Mines, Nestlé, Diebold, and HR professionals from every level of government.

Judith began coaching executives one-on-one in 2001. She is still a practicing coach and has become a leading authority in the emerging industry of executive coaching. She is a National Faculty Member for NeighborWorks America, a non-profit organization created by Congress to provide support and training for community-based revitalization. She also serves as a National Consultant for BorrowSmart Public Education Foundation, a non-profit organization dedicated to homeowner education. Judith holds a degree in criminal justice from the University of Dayton in Ohio.



**Rubi Ho** is Vice President of Sherpa Executive Coaching in Cincinnati, Ohio. He is a Master Executive Coach and has personally directed over 100+ executive coaches who work integrally with fortune 500 companies. He works with senior executives and organizations on leadership development and the integration of leadership and coaching into their cultures.

Rubi partners with the creators of the Sherpa Executive Coaching process, a certification program taught at major universities, including Miami University of Ohio, Texas Christian University and the University of Georgia, and private clients U.S. Bank, Toyota, Oshkosh and Orr Corporation. In a nine-year tenure with Procter & Gamble, he served as North American Corporate Trainer and Manager for Global Product Initiatives, and was a lead steering team member for inclusion and leadership development of Asian minorities.

Born in Vietnam, he and his family escaped from Saigon in 1975, the day before it fell. They settled in Denver, Colorado upon coming to the U.S. Rubi is fluent in Spanish and has a working command of the Vietnamese language.

*Instructors are subject to change.*



The University of Georgia  
Center for Continuing Education

The University of Georgia is committed to principles of equal opportunity and affirmative action. • 7-11/15466